



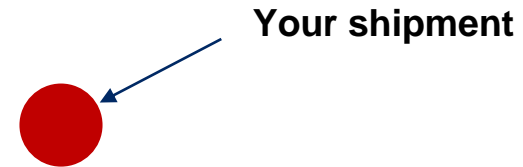
**RailState**

# **Innovation in Rail Network Visibility**

Presentation to PNWARS Fall Meeting  
October 11, 2023

© RAILSTATE, LLC 2023 - ALL RIGHTS RESERVED

**Is following this dot good enough?**



**Your shipment**

**Managing the  
supply chain  
or  
just tracking  
your shipment?**

**Or do you know what's really  
going on? Do you take action?**

# The State of Network Visibility

## Network Visibility Uncovers

- Constrained capacity
- Irregular & unreliable service
- Network congestion
- Network disruptions

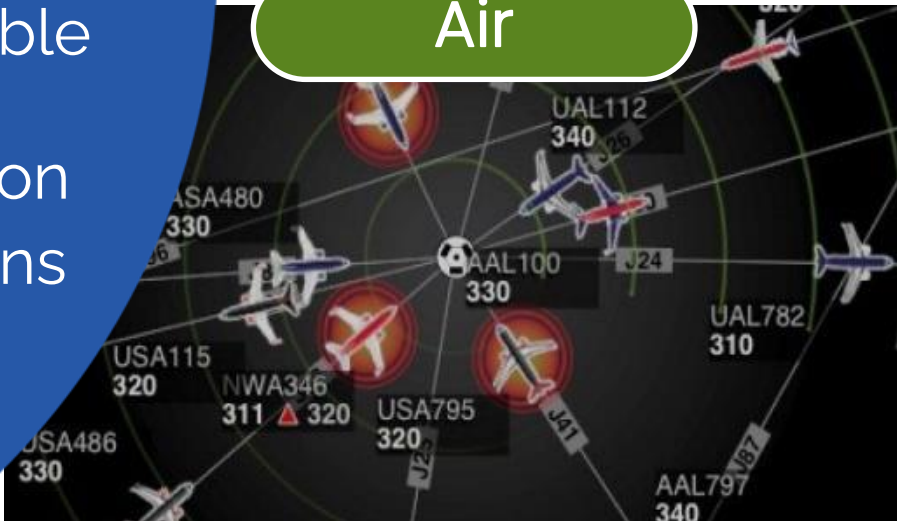
### Ocean



### Roadways



### Air



### Railways

EP 724 (Sub-No. 5)				Data Reporting	
Railroad: CN		Year: 2022	Reporting Week:	OMB Control No. 2140-0033	Expiration Date: 12/31/2020
1. Average Train Speed by Train Type and Overall System Average Train Speed reported in Miles per Hour (MPH)		Geography		Canada	
		Reference period		19-Feb-22	
				Burlington	
				Northern	
				Santa Fe	
Coal				36.1	
Crude				30.6	
Ethanol				36.1	
Grain				47.4	
Intermodal				36.7	
Manifest				33	
Other Unit				0	
System (U.S. Average)		19.76		Automotive	
				Fertilizer	
				Other commodities	
				System-wide	
				30.2	
				33.9	
				39.4	
				27.7	

You only have some system average statistics from 2-3 weeks ago



# Our Solution

Our sensor network uses AI to give customers visibility into

- Rail capacity
- Congestion
- Transit times
- Commodity flows

**Proprietary RailState Sensor**  
outside of rail  
right-of-way

**Sensor Collects:**

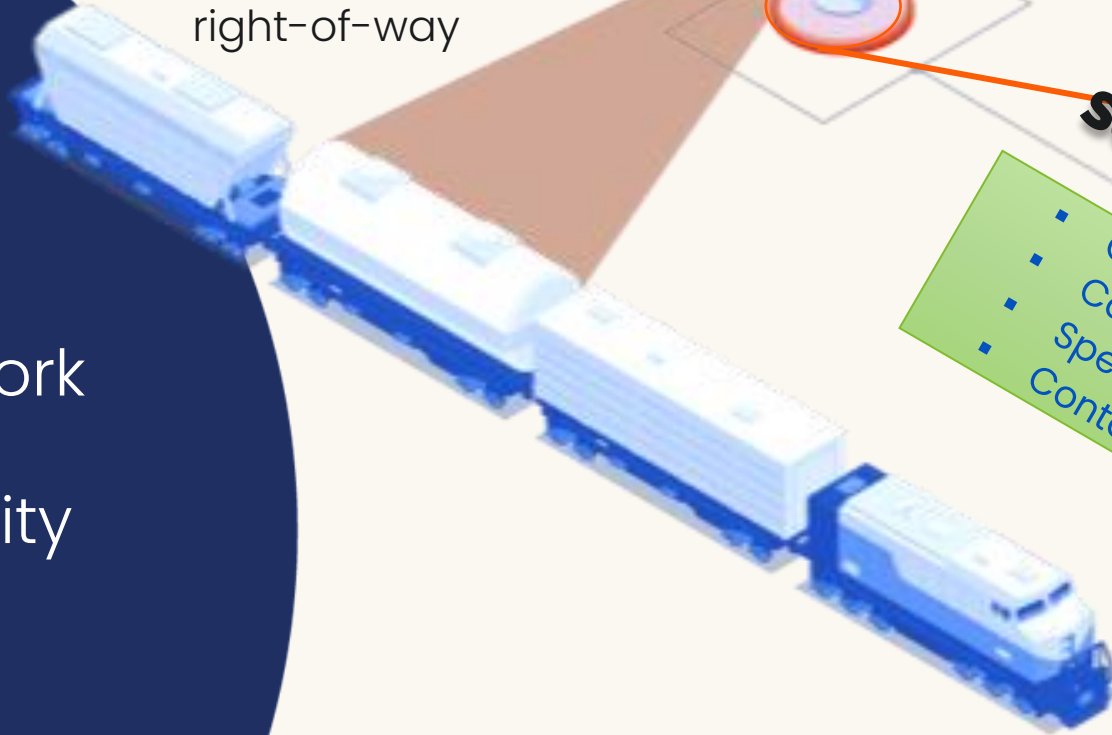
- Car number
- Car type
- Speed
- Containers

**Cloud based AI derives:**

- Capacity
- Congestion
- Transit times
- Commodity flows

**Customer Data**

available in  
one hour



A map of North America showing the Canadian rail network. The network is represented by a dense web of blue lines across Canada, with some lines extending into the United States. Major cities like Vancouver, Seattle, Portland, San Francisco, Los Angeles, Phoenix, Tucson, Ciudad Juárez, Albuquerque, Santa Fe, Las Vegas, Sacramento, and San Francisco are labeled. The map also shows the Great Lakes region and the Atlantic coast. A blue banner in the top right corner contains the text "Canadian Rail Network Complete!". A green banner in the bottom left corner contains the text "Starting in US Now in Southwest".

**Canadian Rail Network  
Complete!**

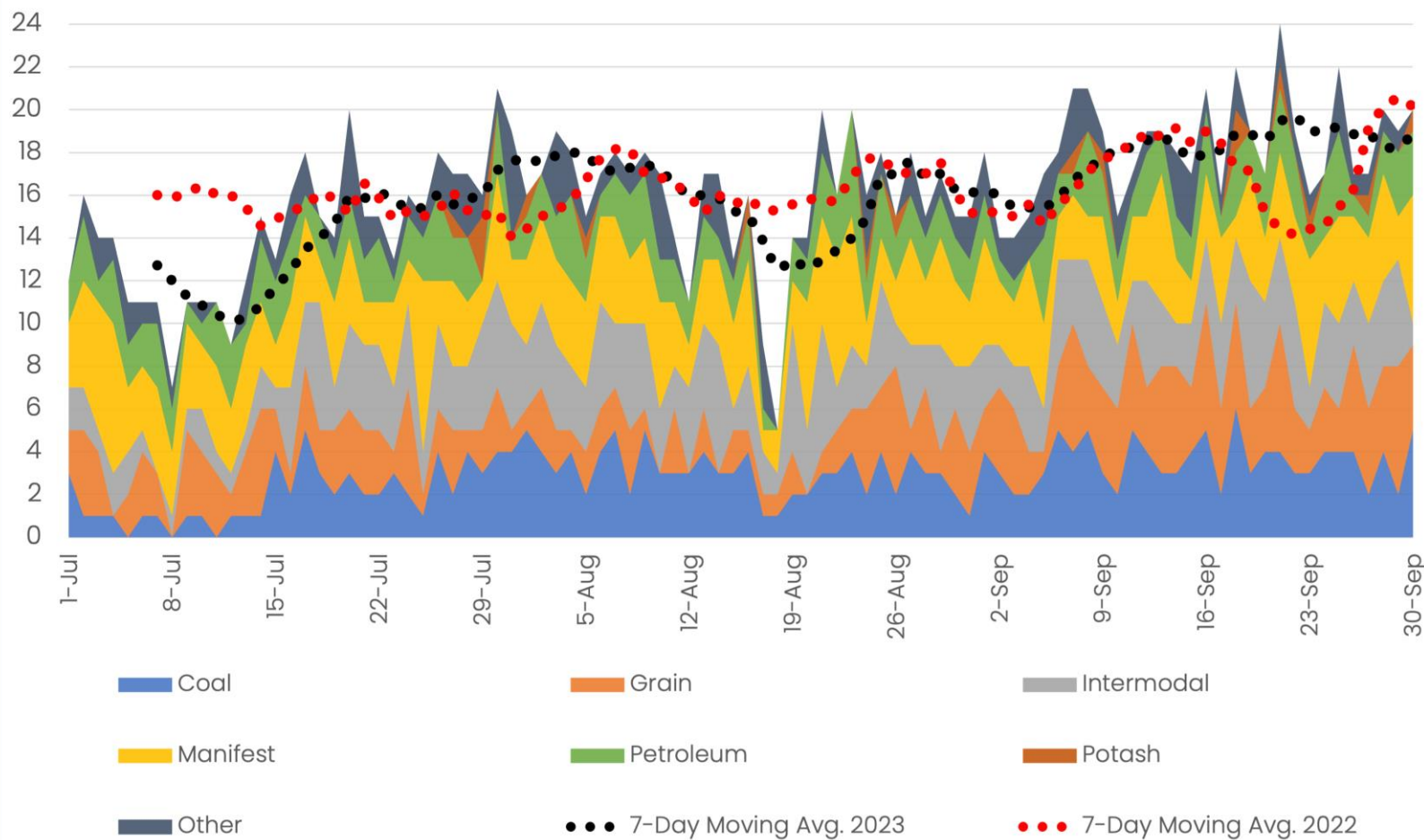
**Starting in US Now in  
Southwest**



# Kamloops CN

## Trains through Kamloops, BC - WESTBOUND - CN

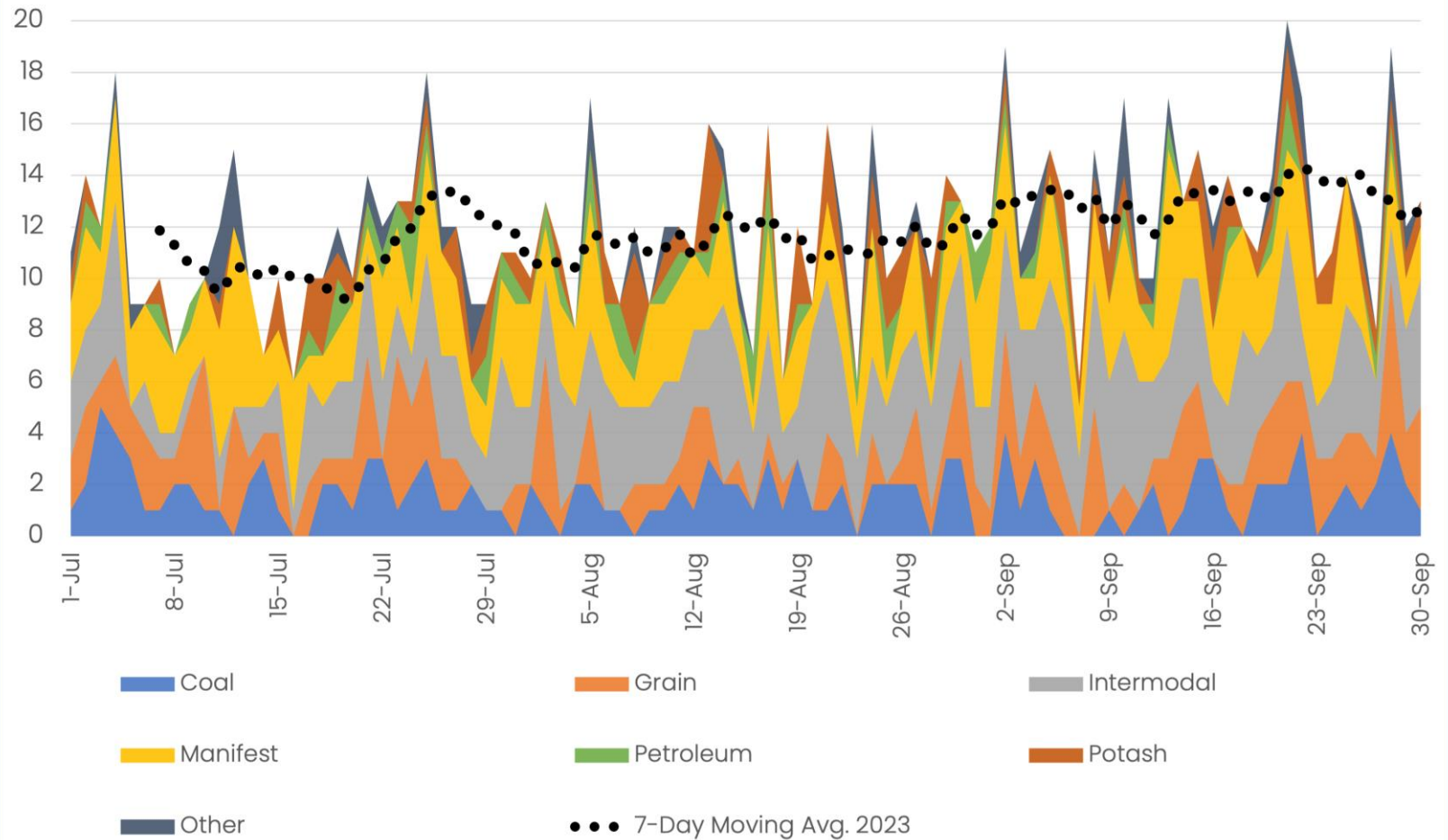
By Train Type



# Kamloops CPKC

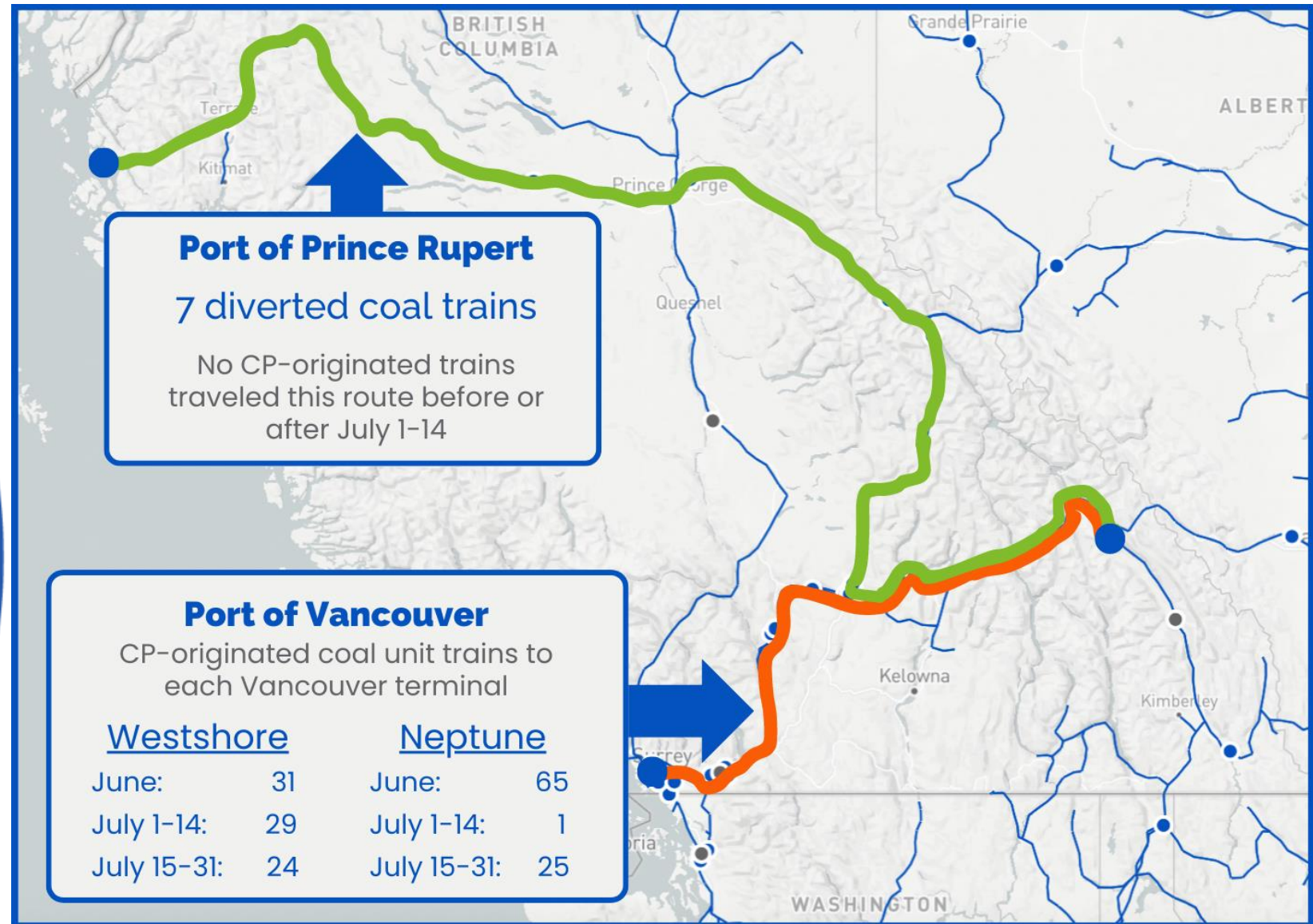
## Trains through Kamloops, BC - WESTBOUND - CPKC

By Train Type



# Coal Diverted

CP-originated coal unit trains

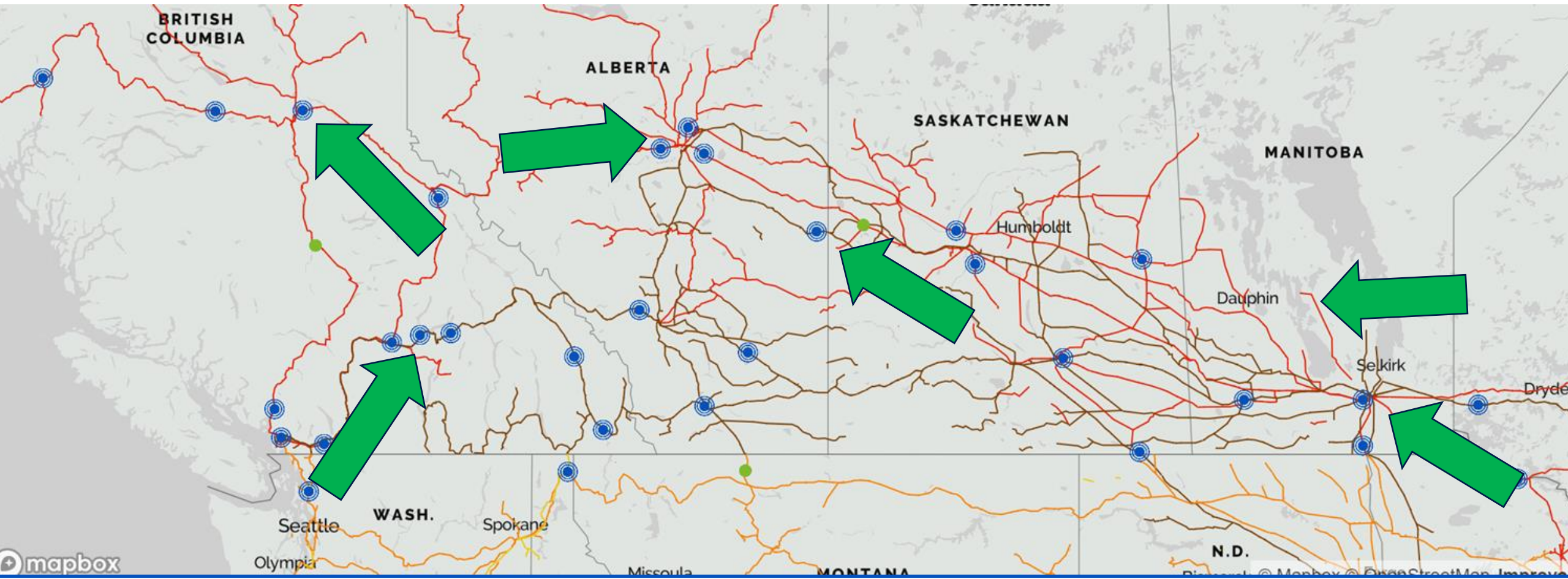


We identified 7 trains that took a long route to Prince Rupert during the strike period. No CP-originated coal trains have traveled this route before or since the strike period.



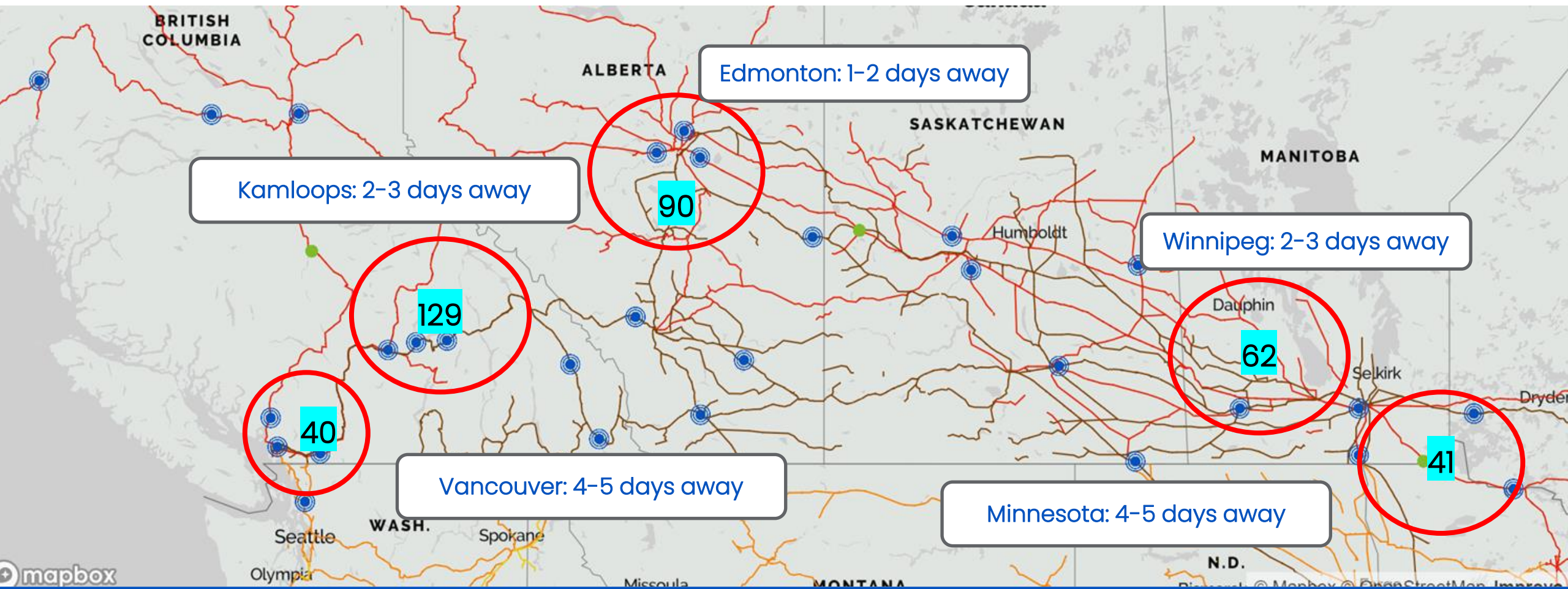
# Empty Boxcar Flows

RailState has a view of most car movements in Canada



# Total Empty Boxcar Pipeline

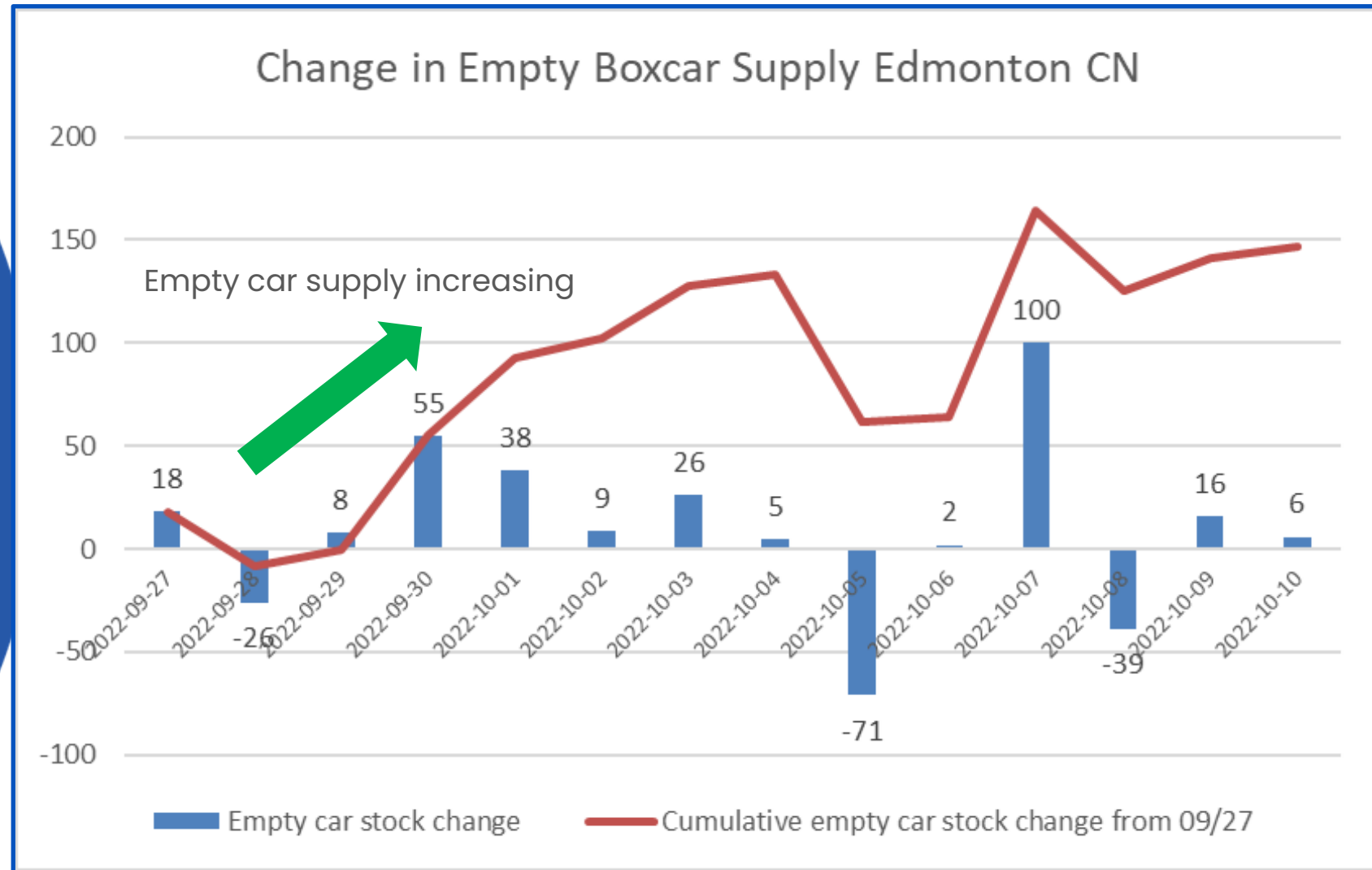
3 Day Average Supply by Zone & Days to Placement at Mills North of Edmonton- CN





# Each Zone

Tracking Change in  
Total Empty Car  
Supply





# Data Unlocks Value

For Forest Products  
and Other Rail  
Customers

## **Plan Effectively**

Know the empty car supply on the network and make decisions about what is coming your way and when

## **Negotiate with Knowledge**

Know the network conditions for more informed car supply discussions with the railway

## **Use the Optionality You've Built**

See problem areas and identify opportunities to plan production and shipments

## **Keep Customers Informed**

Accurate network data lets you provide the service your customers expect

## **Keep Assets Moving**

For private car owners/lessees – assets stay utilized and out of trouble



**RailState**

# Thank You

John Schmitter, Co-Founder

[johnschmitter@railstate.com](mailto:johnschmitter@railstate.com)

Adam Nori, Business Development

[adamnori@railstate.com](mailto:adamnori@railstate.com)